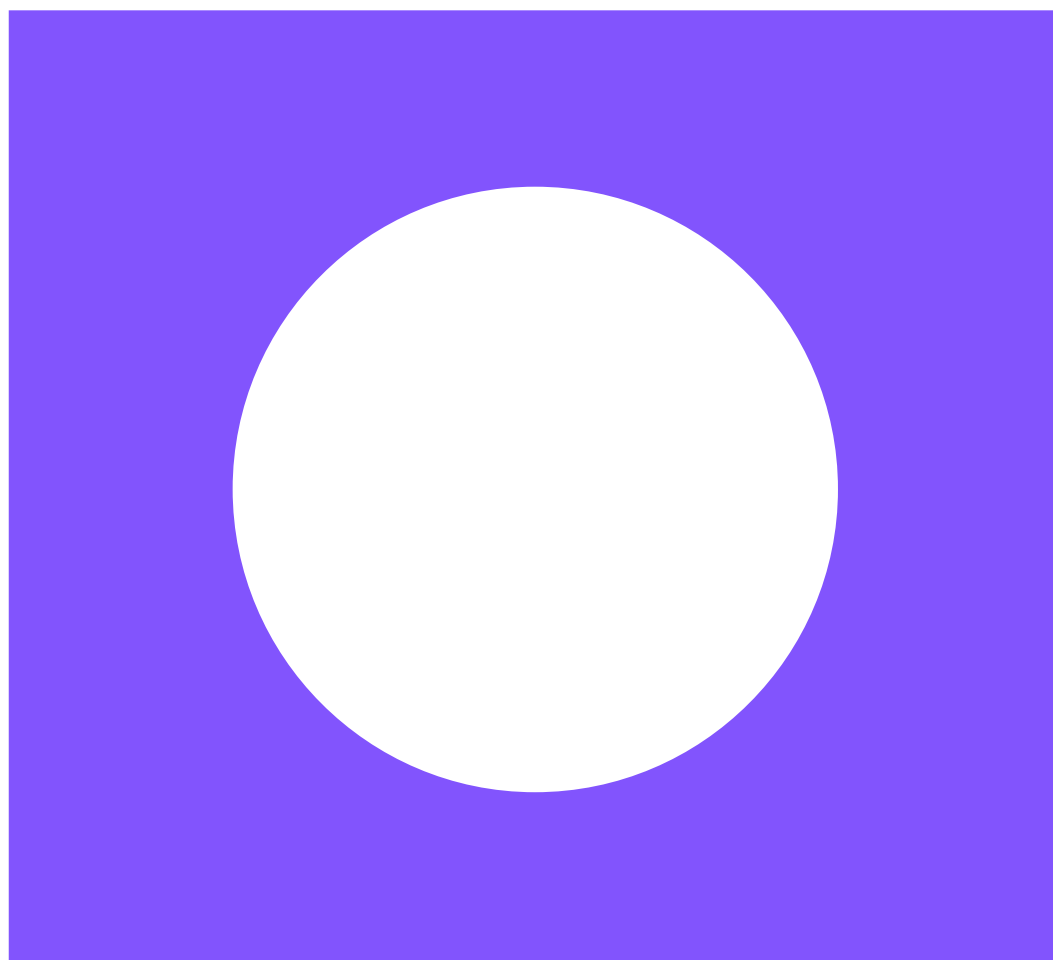


Tárgy: M9 gyorsforgalmi út déli lekötéséhez kapcsolódóan tompai új, teherforgalmi határátkelőhely és kapcsolódó gyorsforgalmi úti szakasz tervezése tanulmány terv és környezetvédelmi engedély szinten			
Megrendelő:  ÉPÍTÉSI ÉS KÖZLEKEDÉSI MINISZTERIUM		1054 Budapest, Alkotmány utca 5. Levelezési cím: 1054 Budapest, Alkotmány u. 5. E-mail: info@ekm.gov.hu	
		PST kód: A009.26	
A térkép adatai EOVS rendszerben vannak és az EOMA alapszintre vonatkoznak.			
Generáltervező: FOMTERV		FŐMTERV Mérnöki Tervező Zrt. Levélcím: 1024 Budapest, Lövőház utca 37. Cím: 1024 Budapest, Lövőház utca 37. Tel.: +36-1-345-9500, Telefax: +36-1-345-9550 E-mail: fomterv@fomterv.hu www.fomterv.hu	
Tervszám: 11.24.014.			
Projektvezető:  Hevesi Gábor	Szakági koordinátor:  Haracsi János	Közlekedéstervezési igazgató:  Takács Miklós	Elnök-vezérigazgató:  Keszthelyi Tibor
Szakasz generáltervező: SPECIÁLTERV		1134 Budapest, Kassák Lajos utca 81. www.specialterv.hu specialterv@specialterv.hu	
Tervszám: 24-101			
Projektvezető:  Szentkereszti Sándor	Projektvezető helyettes:  Freisinger Zoltán	Ügyvezető:  Dávid Gábor	
Szaktervező: M M MOTT MACDONALD		Mott MacDonald Magyarország Kft. Váci Greens F1/2 1139 Budapest, Fiastyúk utca 4-8. Tel: +36 1 288 2020 mottmac.com	
Tervszám: 218429502			
Projektvezető:  Várkonyi Zoltán	Felelős tervező  Mogorós Péter	Ellenőr:  Tölgyesi Magdolna	Ügyvezető:  Várkonyi Zoltán
Terv tárgya: M9 gyorsforgalmi út déli lekötéséhez kapcsolódóan tompai új, teherforgalmi határátkelőhely és kapcsolódó gyorsforgalmi úti szakasz tervezése			
Tervezési szakasz: M9 gyorsforgalmi út déli lekötés (Tomba - országhatár között)			
Tervfázis: TANULMÁNYTERV			Szállítási ütem jele: V01
Szakág: KÖRNYEZETI HATÁSTANULMÁNY			Szakág jele: KHT
Megnevezés: Espoo-i dokumentum - angol verzió			
Dátum: 2025.04.30.	Méretarány: A4	Rajzszám: T_00_KHT_02.05_V01	
Fájl elnevezés: T_00_KHT_02.05_V01.docx			



M9 Road Connection at Tompa and Construction of a New Border Crossing Point

Assessment of Transboundary Impacts
(documentation according to the Espoo
Convention)

April 2025

This page left intentionally blank for pagination.

Mott MacDonald
Fiastyuk utca 4-8
Vaci Greens F/1 floor 2
1139
Budapest
Hungary

T +36 1 288 2020
mottmac.com




SpeciálTerv Kft.
1134 Budapest
81 Kassák Lajos Street

M9 Road Connection at Tompá and Construction of a New Border Crossing Point

Assessment of Transboundary Impacts
(documentation according to the Espoo
Convention)

April 2025

Issue and Revision Record

Revision	Date	Originator	Checker	Approver	Description
A	2025.04.29.	P. Mogyorós	Z. Várkonyi	Z. Várkonyi	For internal review
B	2025.04.30	P. Mogyorós	Z. Várkonyi	Z. Várkonyi	Final
					

Document reference: 218429502 | BA12 | B

This document is issued for the party which commissioned it and for specific purposes connected with the above-captioned project only. It should not be relied upon by any other party or used for any other purpose.

We accept no responsibility for the consequences of this document being relied upon by any other party, or being used for any other purpose, or containing any error or omission which is due to an error or omission in data supplied to us by other parties.

This document contains confidential information and proprietary intellectual property. It should not be shown to other parties without consent from us and from the party which commissioned it.

Contents

Executive summary	1
1 Planned activities	5
1.1 Technical parameters	5
1.1.1 Cross-sectional design	5
1.2 Site plan design	5
1.2.1 Horizontal Routing	5
1.2.2 Elevation Alignment	8
1.3 Junctions	8
1.4 Structures	8
1.5 New network elements to be developed together with the road	8
1.5.1 Related road corrections	8
1.5.2 Correction of intersecting and parallel dirt roads	8
1.6 Planned complex rest area and border crossing point	9
1.6.1 Baseline Information	9
1.6.2 Planned facilities and public utility needs of border crossing points	11
1.6.3 Architectural appearance	15
1.7 Location	16
2 Impact processes and impact areas	17
2.1 Impact processes	17
2.2 Impact areas	18
2.2.1 Landscape protection	18
2.2.2 Wildlife and ecological system	19
2.2.3 Geological medium, groundwater	20
2.2.4 Surface waters	20
2.2.5 Air quality	20
2.2.6 Noise and vibration	21
2.2.7 Built environment and settlements	21
2.2.8 Social, economic, environmental health impacts	22
3 Estimation and evaluation of cross-border impacts	23
3.1 Expected changes in the state of environmental elements and systems	23
3.1.1 Landscape protection	23
3.1.2 Wildlife	24
3.1.3 Soil and water protection	25
3.1.4 Noise and vibration	25
3.1.5 Air quality	25
3.1.6 Built environment	26

3.2	The connected section of the road	26
-----	-----------------------------------	----

4 Mitigation measures 28

4.1	Measures to prevent and reduce adverse impacts	28
4.1.1	Landscape and settlement protection	28
4.1.2	Wildlife protection	29
4.1.3	Protection of geological medium and groundwater	31
4.1.4	Protection of surface waters	31
4.1.5	Air quality protection	31
4.1.6	Noise and vibration protection	31
4.1.7	Protection of the built environment and cultural heritage	32
4.1.8	Climate protection	32

Tables

Table 1.1: Technical parameters of the expressway examined in the Authorised Public Accountant	5
Table 1.2: Layout - parameters applied	6
Table 1.3: Elevation Alignment - Parameters Applied	8
Table 1.4: Planned structure and number of km of structures (bridges)	8
Table 1.5: Planned employee and service parking demand per building.	10
Table 1.6: Planned pre-parking numbers for border crossers	11
Table 1.7: Energy requirements of the planned facilities for border crossing points based on the architectural sketch plan	11
Table 2.1: Possible environmental impact processes	17
Table 6.1: Proposed landscape protection measures	28
Table 6.2: Parameters of the temporary demarcation of the construction site (taping, temporary protective fence)	30

Figures

Figure 1.1: Version examined in the Authorised Public Accountant	7
Figure 1.2: General site plan of the planned border crossing	14
Figure 2.11: Planned colours of buildings	15
Figure 3.1: Visibility delimitation of the planned expressway and its associated facilities.	23
Figure 1.7: Serbian road network in the further planning area	26

Photos

Image 3.1: View of Serbia from the Hungarian side, with the technical lock in the foreground	24
--	----

Image 3.2: Habitats next to the technical lock on the Hungarian side

24

[Click or tap here to enter text.](#)

Executive summary

On 8 January 2024, the Ministry of Construction and Transport (hereinafter: Client) signed a design contract with the consortium consisting of FŐMTERV Engineering Design Ltd. and Roden Engineering Office Ltd. for the performance of the task in the subject of "Design of a new freight border crossing point and a related expressway section in Tompa in connection with the southern connection of the M9 expressway" (PST: A009.26). As a subcontractor of the Consortium, SpeciálTerv Kft. (hereinafter: Designer) prepared the study plan, which formed the basis of the environmental impact assessment (hereinafter: EIA). **The environmental impact assessment was prepared by Mott MacDonald Hungary Kft. on behalf of SpeciálTerv Kft.**

Based on the information available to the designer, there is no preliminary plan for the object project.

According to the design disposition, the Planner was responsible for planning the continuation of the binding with the same parameters as the previous phase in a length of approximately 7.0 km at the study plan level for a new border crossing point to be established in the area of Tompa.

Part of the planning task was the preparation of studies and proposals for the starting point of the road section and the border intersection, consultation with the planner of the previous section and the Serbian side, participation in the work and consultations of the Serbian-Hungarian working group. The design of the border crossing point was also part of the task in the draft plan and at the level of land use.

From the point of view of legal alignment, the most relevant legislation is Government Decision 1342/2023 (VII.31.), which decided on the necessity and financial background of the examination of the new alignment of the M9 expressway and the designation of a new border intersection.

The planned development of the section affected by the investigation (hereinafter referred to as the Project) is the basis of Government Decree 345/2012 (XII.6.) on declaring administrative authority cases related to certain transport development projects as matters of major importance from the point of view of the national economy and on the designation of the competent authorities. **National Road Transport Projects / 1.1. On the basis of Section 1.1.83 of the Motorways, as "Implementation of the section between the M95 expressway, the M9 expressway and the Tompa, national border" it qualifies as an investment of major importance.**

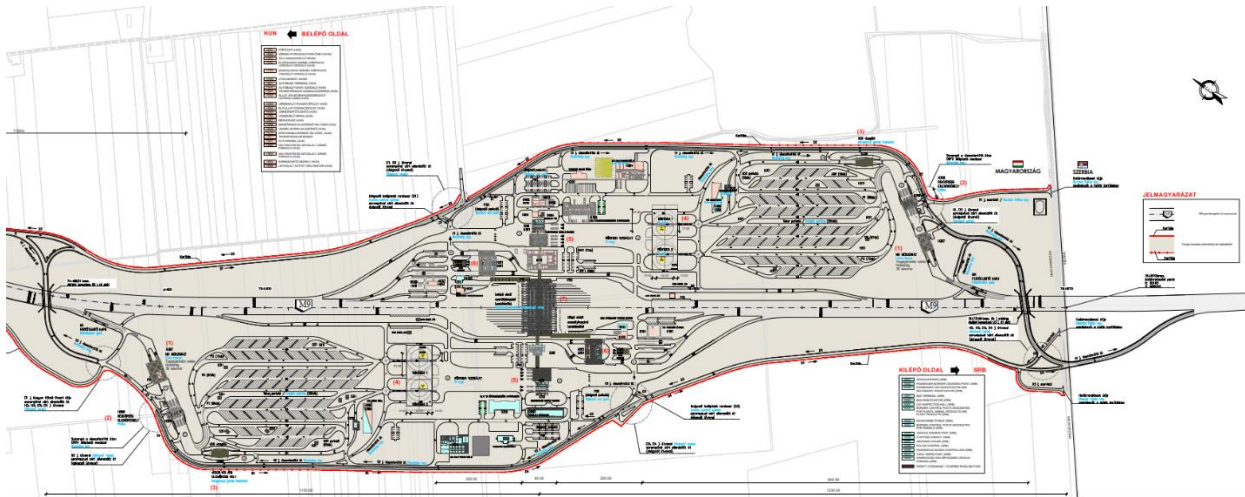
Pursuant to Annex 1 of Government Decree 314/2005 (XII.25.) (on the environmental impact assessment and the uniform environmental use permit procedure, hereinafter: Environmental Impact Assessment and Uniform Environmental Use Permit Procedure, hereinafter: Environmental Impact Assessment Act), the planned activity can be classified into the following points:

- 37. Public roads and private roads not closed to public traffic,
 - a) construction of expressways (motorways, expressways) with junction elements

For the above reasons, the investment is one of the activities subject to an environmental impact assessment.

social rooms, a police building, inspection buildings and halls, warehouses, passenger traffic areas, toilets, and parts of the building for the accommodation of persons subject to official procedures are necessary to adapt to the function of the border crossing point.

Figure 0.2: Planned construction of a complex rest area and border crossing point



Source: Study plan, January 2025

Based on the Customer's data provided in February 2025, the expected time of the start of installation (construction) is the first quarter of 2032 and the construction is expected to take approximately 2 years, with an expected completion deadline of the first quarter of 2034. Based on the Planning Data Report, the expected start of operation is expected to take place in the second half of 2034.

In the case of expressways, under normal operating conditions, the service life of the track structure is 20 years, and with continuous and thorough maintenance, the planned service life can be increased to 30-40 years.

The operation of the complex rest area and the border crossing point is also expected to take 30-40 years, however, if the Republic of Serbia joins the Schengen area of the European Union, it will be possible to operate for a shorter period of time. At the time of the drafting of the plan, we do not have certain information on when the Republic of Serbia will join the EU's Schengen area.

Summary assessment of environmental impacts

Based on the studies carried out, it can be stated that the cross-border impact is not significant only from the point of view of landscape protection, wildlife protection and soils (see the details below). No cross-border effects can be expected for the other environmental elements.

From the point of view of landscape protection, the greatest impact will be the appearance of a new complex resting place and border crossing point in the landscape. Based on the visibility studies carried out in the EIA, it can be stated that due to the intersections at different levels, the complex rest area/border crossing point and expressway change the landscape from the northern direction. However, this effect will not be significant, as there is no element of significant landscape value on the Serbian side, and there are no settlements several kilometers away from which the view may be disturbing. On the Serbian side, the continuation and operation of the planned road is expected to change the existing land uses, land cover, landscape ecological relationships and territorial functions in a similar way as on the Hungarian

side, but a significant area occupation of the joint Hungarian-Serbian border crossing point is no longer expected.

From the point of view of wildlife conservation, we established that according to the available information, there is no area demarcated from a nature conservation point of view between the national border and the Subotica bypass. On the Serbian side, the trail also touches similar large-scale arable land as on the Hungarian side. From the point of view of wildlife protection, similar effects can be expected in Serbia as in Hungary both during construction and operation, with the exception that there will be no close-to-nature forest areas next to the trail, and there will be no complex and border crossing point of 90 hectares on the other side of the border.

From the point of view of geological medium, a terminating effect is expected in the parts affected by land extraction. The effect of extraction and compaction will be bearable during construction. The operation is neutral from the point of view of the soil medium, and under normal operating conditions, no pollution or damage to the geological medium has to be taken into account.

From the point of view of air quality protection, the air quality effects in Serbia during the construction phase are similar to those on the Hungarian side. During the establishment of the complex resting place, under unfavourable meteorological conditions, the dust can reach up to 100-200 meters across the border. For the other components tested (NO_x, CO, NO₂), if the machines work directly near the border, a cross-border effect of a few 10 m can be expected. However, these effects will be bearable, as there are no sensitive effects (e.g. residential area, recreation area, etc.) on the Serbian side in the 1 km vicinity of the construction site. The effects of operation (operation) increase within the immediate area of influence (this is the expropriation limit in practice) due to emissions from traffic, but at a distance of more than 50 m from the road, the increase is almost undetectable (<5%). This effect will be bearable on the other side of the border, as well as on the Hungarian side.

From the point of view of noise protection, the cross-border construction noise impact can only be heard at a distance of a few 10 metres, but the requirements for the impact area may change, so the contours of the impact areas only extend to the national border. On the Serbian side, there are no facilities to be protected (e.g. residential areas, recreation areas, etc.) in the 1 km vicinity of the construction site, so the impact of the construction remains bearable on the Serbian side as well as on the domestic side. The noise effects of the operation will be neutral on the other side of the border as well, on the one hand due to the long distance of the buildings to be protected, and on the other hand, on the other side of the border, the noise impact of the section of the Serbian expressway will be decisive.

The present investigation has not identified any grounds for exclusion, or any significant or irreversible impacts or impacts which could not be reduced by mitigation measures that would prevent the installation and operation of the investment on the Serbian side concerned.

1 Planned activities

The length of the design phase is 6.057 km, the subject of the study is the Tompa section of the M9 expressway and the establishment of a new joint Hungarian-Serbian border crossing point.

Table 1.1: Technical parameters of the expressway examined in the Authorised Public Account.

Technical Parameter	Typical quantity
Total length (m)	6 057
Of which new route (m)	6 057
Of this, existing route (m)	0
Nodes (pcs)	-
Works of art (pcs)	4
Watercourse crossings, culverts	-

Source: Study plan, January 2025

1.1 Technical parameters

According to the Technical Road Specification e-UT 03.01.11 "Road Design (KTSZ)", the technical parameters of expressways:

- Road category: K.II. Planning Department,
- Design Speed: 110 km/h,
- Environmental condition: A
- Length of the road: 6057 m (6,057 km)

1.1.1 Cross-sectional design

Cross-sectional design of the expressway

- Number of traffic lanes: 2 x 2 lanes,
- Traffic lane width: 3.5 m,
- Enclosure width: 2 x 8 m,
- Width of the shoulder: 1.5 m,
- Crown width: 20 m

1.2 Site plan design

1.2.1 Horizontal Routing

The planned intervention is located in Bács-Kiskun County, in the administrative area of the city of Tompa. The route of the planned expressway to be examined was designated between the settlements of Mélykút and Tompa. The location of the border intersection point concerns the area of the Kiskunhalas district.

Basic data of the planned expressway:

- The starting section of the planned route: 70+813 km
- End section of the planned alignment: 76+870 km
- Length of the planned route: 6,057 m (6,057 km)

The trail starts at chainage 70+813 km, joins the previous section here and goes almost south on arable land until chainage 72+000 km. Then the route turns to the SW with an arc radius of $R=1100$ m, then crosses the paved road of an industrial area at chainage 72+905 km. Here, the paved road of the industrial area crosses the expressway on a separate level from above (structure B1 j.). The track then runs in a straight line, then before crossing road 5501 j., it turns again with a radius of $R=1500$ m in a nearly southerly direction. The expressway crosses the existing national road 5501 km in km 73+951. During the planning process, it was determined that at the intersection of road 5501, the expressway will be constructed as an overpass. The reason for this is primarily to ensure the direction of movement of big game, and cycling development can also be established as part of the designated Euro-velo 13 trail. The intersection of the roads is unfavourable, so on road 5501 there are 14+363 – 15+113 km alignment correction is made. With alignment correction, a more favorable crossing angle can be ensured, which results in a more economical solution in terms of structure construction. The trail then goes almost in a southerly direction and reaches the border at chainage 76+870 km.

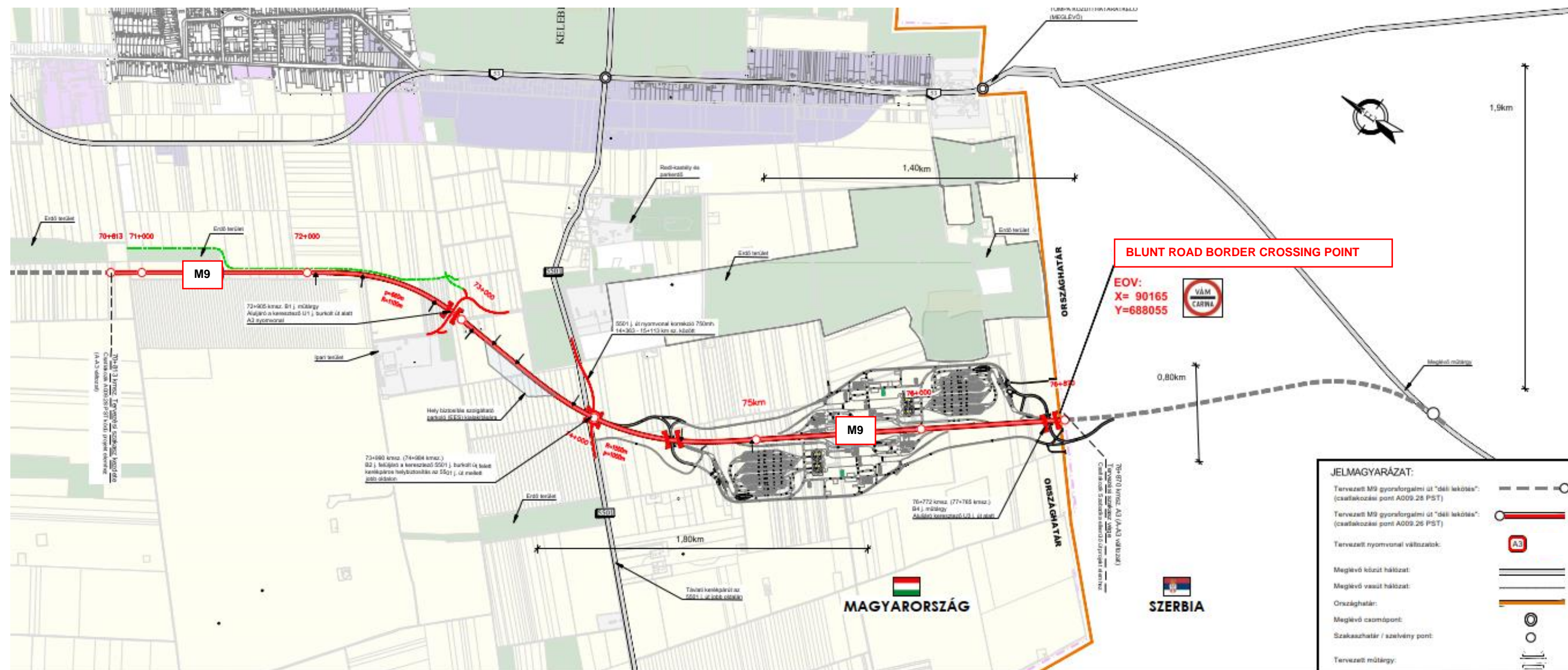
Table 1.2: Topographic alignment - parameters applied

Site parameters	Permissible extreme value		Extreme value applied
Smallest horizontal radius	R [m]	600	1000
Minimum Transition Arc Parameter	p[m]	220	560

Source: Study plan, January 2025

The planned establishment of the joint border post is planned approximately between chainages 75+000 – 76+500.

Figure 1.1: Version examined in the EIA



Source: Study plan, January 2025

1.2.2 Elevation Alignment

The planned route leads through the lowland area, so its elevation line is lowland in nature.

The horizontal lines used comply with the parameters 110 km/h, but they can also be used for higher design speeds (130 km/h).

Table 1.3: Elevation Alignment - Applied Parameters

Height parameters	Permissible extreme value		Extreme value applied
Biggest Rise	e [%]	5	3,5
Smallest convex arch	Rd [m]	9200	9200
Smallest concave arc	Rh [m]	5000	5000

Source: Study plan, January 2025

1.3 Junctions

No junction is planned on the section of the planned expressway.

1.4 Structures

In the design area, 4 structures must be built in the following places and structures:

Table 1.4: Planned structure and number of km of structures (bridges)

Bridge sign	Km no.	Bridge type	Designed structure
B1	72+905	Underpass crossing under dirt road U1	Prefabricated durable superstructure
B2	73+990	Overpass crossing 5501 j. over road and wildlife passage	Prefabricated durable superstructure
B3	74+488	Underpass crossing under road U2	Clamped Steel Cabinet Support Mule Bridge
B4	76+772	Underpass under road U3	Clamped Steel Cabinet Support Mule Bridge

Source: Study plan, January 2025

1.5 New network elements to be developed together with the road

1.5.1 Related road corrections

The installation of the expressway requires the correction of national road 5501 j at the crossing of km 73+984 km on a length of 750 m, between its chainage 14+363 – 15+113 km.

Due to the planned expressway, it is also necessary to correct the paved road leading to an industrial area (former MgTsz site) on a length of about 760 m near the 73+000 km section of the expressway.

1.5.2 Correction of intersecting and parallel dirt roads

Access to the areas cut off during the implementation of the planned expressway will be ensured by parallel dirt roads, in consultation with the municipalities concerned. Dirt road crossings are created at a separate level in the necessary places. The paved sections of the dirt roads are paved with a width of 6.50 m and a crown width of 8.50 m, while the stabilized unpaved sections are 4.0 - 7.0 m wide, depending on their network role, length and expected

traffic volume. Before the connection of the dirt roads to the paved road, a mud-shaking pavement of at least 50 m will be built.

Approximately 2330 m of dirt roads will need to be built/corrected during the entire design phase.

1.6 Planned complex rest area and border crossing point

After the border intersection, a complex rest area is planned to be established on the Hungarian side, which also includes the facilities of the border crossing point necessary for the Hungarian and Serbian border controls. The two functions cannot be separated from each other, they are closely related to each other. Below is a brief introduction to the planned complex rest area and border station and its facilities. **It is to be noted that, based on the designer's disposition, the border crossing point had to be designed only at the level of a concept plan (sketch plan), therefore the plans of the facilities and the border station presented here may still change in the following planning phases (permit and construction plans).**

The planned design of the complex rest area and border station **that Figure 1.2** Presents.

Within the complex rest area, the border crossing must be suitable for unrestricted freight traffic, ADR and live animal crossing, in addition to passenger traffic. With regard to road connections, passenger and freight handling areas and parking spaces for cars, buses, trucks and vehicles transporting dangerous goods will be established at the border crossing point in a well-separated manner.

In the area, offices, service rooms, social rooms, a police building, inspection buildings and halls, warehouses, passenger traffic areas, toilets, and parts of the building for the accommodation of persons subject to official procedures are necessary to adapt to the function of the border crossing point.

1.6.1 Baseline Information

- Design site area: ~900,000 m² (~90 ha).
- Current zone classification: Ma - 1 — Agricultural territorial zone.

The current zoning of the area does not allow the establishment of a border crossing, so the regulatory plan needs to be modified.

1.6.1.1 Headcount data

In order to ensure the continuous operation of the border crossing, the operation of the crossing must be ensured in shifts between 0 and 24 hours, both on the Hungarian and Serbian sides.

According to the preliminary concept plans and one, the total number of employees is 1411, which includes both the Hungarian and Serbian employees, and the total number of employees given by the various authorities was also taken into account.

1.6.1.2 Parking requirement

The placement of passenger cars for the staff and service of the border station was planned taking into account Annex 4 of Government Decree No. 253/1997 (XII.20.) (OTÉK):

- 11. for every 200 m² of the manufacturing and assembly premises of an industrial (factory) independent purpose unit,
- 14. for each started 20 m² net floor area of the premises of offices and other independent units for long-term stays,

Taking into account the above, the parking needs of each building are determined according to the table below, both in terms of border control on the entry and exit sides (H – border control on the entry side, S – border control on the exit side).

Table 1.5: Planned parking demand for employees and service employees per building.

Page	Fate.	Building Name	Net floor area (m2)	Parking space requirement (pcs)	Number of planned tree planting
H	001	Main building	4591	78	13
H	002	Passenger level crossing	440		
H	101	VAT Refund Office	27	3	1
H	102	Primary Passenger Car Test Location	0	0	0
H	103	Secondary Passenger Car Inspector	243	2	1
H	104	Passenger toilets + NTPS office	133	3	1
H	105	Passenger toilet	66	0	0
H	201	Bus Terminal	1290	27	5
H	202	Bus Physical Test Location	0	0	0
H	301	Freight Testing Hall	387	2	1
H	302	Border Inspection Posts for Veterinary and Phytosanitary Purposes	1265	10	2
H	303	Racehorse reception building	469	4	1
H	304	Live animal reception building	2012	18	3
H	305	Vehicle Disinfectant	274	0	0
H	306	Customs Clearance Office	1326	46	8
H	307	Balance House	96	3	1
H	308	Police checkpoint	63	2	1
H	309	Dangerous goods inspection site	41	0	
H	310	X-ray inspection site		0	
H	311	Freight washroom	37	0	0
H	901	Dogs	358		
H	902	NAV warehouse and reserved vehicle parking	276	2	1
H	903	Police warehouse and confiscated vehicle parking	143	2	1
H	904	Maintenance workshop	308	3	1
H	905	Cold storage for goods	66,35	0	0
H	-	Employee parking	0	80+30	
And	001	Serbian Authorities Main Building	921	21	4
And	102	Primary Passenger Car Test Location	0	0	0
And	103	Secondary Passenger Car Inspector	243	2	1
And	104	Passenger toilets + toll office	133	3	1
And	105	Passenger toilets	66		
And	201	Bus Terminal	1290	27	5
And	202	Bus Physical Test Location	0	0	0
And	301	Freight Testing Hall	387	2	1
And	302	Border Inspection Posts for Veterinary and Phytosanitary Purposes	1265	10	2
And	303	Racehorse reception building	469	4	1

Page	Fate.	Building Name	Net floor area (m2)	Parking space requirement (pcs)	Number of planned tree planting
And	304	Live animal reception building	2012	18	3
And	305	Vehicle Disinfectant	274	0	0
And	306	Customs Clearance Office	1326	46	8
And	307	Balance House	96	3	1
And	308	Police checkpoint	63	2	1
And	309	Dangerous goods inspection site	41	0	0
And	310	X-ray inspection site	0	0	0
And	311	Freight washroom	37	0	0
And	901	Dog kennel	0	0	0
And	902	Warehouse and reserved vehicle parking	1200	4	1
And	-	Employee parking	0	62+80+30	
Altogether				627	70

Source: Study plan, January 2025

In addition to the staff working and serving at the border crossing point, a significant number of parking spaces have also been planned for border crossers, preventing the congestion of vehicles experienced at the current Tompa border crossing point, which on the Hungarian side will be congested up to the Tompa bypass section of main road 53. On both sides of the border, the following parking numbers are planned for those crossing the border:

Table 1.6: Preliminary parking numbers planned for complex rest areas

Page	Name of the parking lot	Parking number (pcs)
Hungarian	ADR Parking	50
Hungarian	Cargo parking	250 (73+97+80)
Serbian	ADR Parking	50
Serbian	Cargo parking	250 (73+97+80)
All parking lots		600

Source: Self-edited based on the January 2025 Study Plan

1.6.2 Planned facilities and public utility needs of border crossing points

According to the preliminary concept, the energy needs of the border crossing point will be as follows on the Hungarian (H) and Serbian (S) border control sides.

Table 1.7: Energy needs of the planned facilities of the border crossing point based on the architectural sketch plan

Country	No	Building Name	Water Requirements	Electricity (excluding mechanical engineering)
			V (m3/h)	Kw
H	001	Main building	90,40	235,24
H	002	Passenger level crossing	0,00	80,00
H	101	VAT Refund Office	0,48	8,18
H	102	Primary Passenger Car Test Location	0,00	0,00

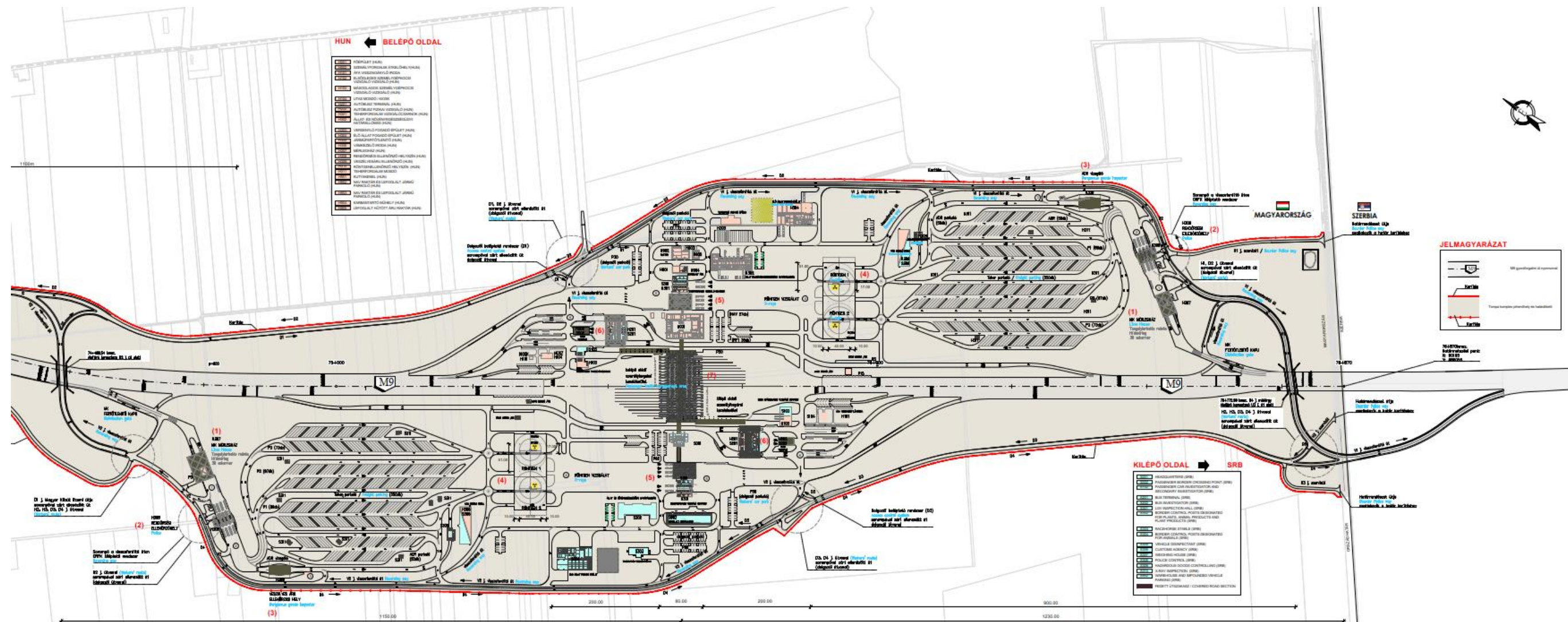
Country	No	Building Name	Water Requirements	Electricity (excluding mechanical engineering)
H	103	Secondary Passenger Car Inspector	0,62	10,73
H	104	Passenger toilets + NTPS office	1,65	3,19
H	105	Passenger toilets	1,45	2,65
H	201	Bus Terminal	2,96	54,60
H	202	Bus Physical Test Location	0,00	0,00
H	301	Freight Testing Hall	0,48	11,61
H	302	Border Inspection Posts for Veterinary and Phytosanitary Purposes	2,72	64,52
H	303	Racehorse reception building	0,48	20,47
H	304	Live animal reception building	1,20	60,37
H	305	Vehicle Disinfectant	0,12	4,00
H	306	Customs Clearance Office	12,60	64,72
H	307	Balance House	0,48	3,85
H	308	Police checkpoint	0,24	2,84
H	309	Dangerous goods inspection site	0,12	1,42
H	310	X-ray inspection site	0,00	0,00
H	311	Freight washroom	2,00	0,74
H	901	Dogs	0,62	6,53
H	902	NAV warehouse and reserved vehicle parking	0,00	5,53
H	903	Police warehouse and confiscated vehicle parking	0,12	2,86
H	904	Maintenance workshop	1,20	5,31
H	905	Confiscated Goods Cold Storage	0,00	1,59
S	1	Serbian Authorities Main Building	22,60	58,81
S	102	Primary Passenger Car Test Location	0,00	0,00
S	103	Secondary Passenger Car Inspector	0,62	10,73
S	104	Passenger toilets + toll office	1,62	3,19
S	105	Passenger toilets	1,45	2,65
S	201	Bus Terminal	2,96	54,60
S	202	Bus Physical Test Location	0,00	0,00
S	301	Freight Testing Hall	0,48	11,61
S	302	Border Inspection Posts for Veterinary and Phytosanitary Purposes	2,72	64,52
S	303	Racehorse reception building	0,48	20,47
S	304	Live animal reception building	1,20	60,37
S	305	Vehicle Disinfectant	0,12	4,00
S	306	Customs Clearance Office	12,60	64,72
S	307	Balance House	0,48	3,85
S	308	Police checkpoint	0,24	2,84
S	309	Dangerous goods inspection site	0,00	0,00
S	310	X-ray inspection site	0,00	0,00
S	311	Freight washroom	2,00	0,74
S	901	Dogs	0,00	0,00
S	902	Warehouse and reserved vehicle parking	0,00	33,15

Country	No	Building Name	Water Requirements	Electricity (excluding mechanical engineering)
Altogether			169,51	1014,05

Source: Study plan, January 2025

For the design of the planned complex rest area and border crossing point, see the figure below

Figure 1.2: General site plan of the planned border crossing point



Source: Study plan, January 2025

The construction of the planned 2 X-rays requires a high-voltage electrical supply and at least 32 Amperes of electric current for the secondary testing workshop.

In the later planning phase necessary for the safe operation of the border crossing point, the planning (indication on the drawing) of the water network and the water abstraction options for firefighting purposes (above-ground fire hydrant, fire water reservoir if necessary) is necessary.

In order to illuminate the border crossing point at night, the electrical network and the related fittings and structures must be designed in a later planning phase, and explosion-proof lighting equipment must be designed and installed at the ADR testing sites.

For the planned resting place, the following is also required:

- Water supply approx. 3200 m
- Wastewater disposal approx. 4900 m
- Power supply approx. 3000 m

pipeline construction.

In terms of buildings, according to the energy concept plan, a total of 5500 m² of solar panels will be installed, which can cover about 55% of the annual electricity demand.

1.6.3 Architectural appearance

The aim of the project is to create a modern and forward-looking building complex using the most modern architectural technologies and materials. Innovative architectural solutions such as modular construction, intelligent building management systems and environmentally conscious use of materials all contribute to the long-term sustainability and flexible adaptation of buildings.

Color scheme

When choosing the color scheme of the buildings, the architectural concept design preferred the use of natural and restrained colors. This color palette has a beneficial effect on people not only aesthetically, but also psychologically.

Natural colors, such as earth tones (browns, beiges, grays), suggest harmony and calmness, in harmony with the environment.

Figure 1.3: Planned colours of the buildings



Source: Study plan, January 2025

Use of materials

During the design process, it was important to create a modern and forward-looking building complex using modern architectural technologies and materials in the architectural sketch plan. Innovative architectural solutions such as prefabrication and modular construction and environmentally conscious use of materials all contribute to the long-term sustainability of buildings. For the façade cladding of the buildings, timeless and durable materials such as raw concrete surfaces and sheet metal cladding of different textures were chosen, which provide a

modern and contemporary solution and give the building a sophisticated appearance. On buildings that can also be used by public traffic, wooden façade cladding also appears on smaller surfaces. The natural appearance of wood gives warmth and character to buildings, but its application is not only aesthetically beneficial, but also beneficial from a sustainability point of view, as wood comes from renewable sources.

The structure of the space covers is made of wood and steel, which gives a pleasant appearance to those passing underneath. The illuminating surfaces of the roof, of course, make this space below bright.

The covering of the organically undulating roof surfaces consists of a combination of white metal sheet and translucent polycarbonate with UV protection, which easily follows the shape of the broken roof. Sheet metal cladding also appears on the hall buildings. The use of quality materials suggests durability and elegance in both buildings and space coverings.

1.7 Location

The examined route touches the south-western administrative area of the city of Tompa in Bács-Kiskun county, Hungary. On the Serbian side, the route will affect the outskirts of Subotica and Kelebija.

2 Impact processes and impact areas

2.1 Impact processes

The Table 2.1 shows the impacts, impact processes and the environmental elements and systems involved in the different phases of the planned activity.

Table 2.1: Possible environmental impact processes

Factors	Influencers	Direct effects	Indirect effects
Establishment			
Site preparation, site reservation	Air, noise	Increase in immission caused by emissions	Disturbing effect on wildlife and humans; Health damage
	Earth, soil	Volume decrease Erosion	Decrease in agricultural usability Degradation of vegetation
	Surface waters	Changes in runoff conditions	Fragmentation of a catchment area
	Wildlife	Habitat and habitat loss Jamming	Biodiversity loss Periodic decline in the number of individuals, migration
	Landscape	Changes in land and land use	Changes in the cityscape
	Settlement	Change of property boundary Disturbance/excavation of archaeological sites Possible deterioration of monumental values Employment growth	Functional outages in some areas Destruction of cultural heritage values/placing them under protection Socio-economic prosperity is increasing
Substructure and superstructure works (material handling, emissions from machinery, damage to roadside areas)	Air, noise	Increase in immission caused by emissions	Disturbing effect on wildlife and humans; Health damage
	Earth, soil	Changes in soil structure and compactness	Changes in soil water balance
	Air	Transient air pollution	Soil and water contamination
	Wildlife	Disturbance, habitat loss	Migration, degradation
	Settlement	Noise and vibration interference	Changes in the condition of structures
	Landscape	Aesthetic effect, landscape change	-
Generation and storage of construction waste	Earth, soil	Soil pollution	Water quality degradation
	Landscape	Aesthetic effect	-
Realization			
Traffic (increasing or reorganizing)	Air, noise	Increase in immission on the trail and in its surroundings, disturbance of noise and vibration Reduction of noise and vibration load on the urban road network	Physiological changes
	Wildlife	Disturbance, loss of living space	Migration, degradation

Factors	Influencers	Direct effects	Indirect effects
Road as a facility	Settlement	Individual death	Physiological changes
		Disturbing effects of noise and vibration on the track and its surroundings	
	Wildlife	Reduction of noise and vibration load on the urban road network	Population degradation Genetic drift Appearance of new species
		Limiting fragmentation, migration and migration	
		Hitting due to the lure effect of the roadway	
		Habitat expansion with marginal vegetation	
Road maintenance, winter cleaning	Air	Changes in microclimate	Ecosystem change
	Surface water	Changes in water dynamics	Changes in water flow
	Landscape	Changes in land and land use	Changes in landscape and landscape structure
	Settlement	Changes in the condition of structures	Innovation impacts: new investments in the region
		Creation of new structures	Change of settlement character
			Changes in settlement relations
Demolition works	Earth, soil	Soil pollution	Economic growth of the region
	Wildlife	Disturbance, habitat loss	Deterioration of water quality Habitat degradation
Abandonment			
Recultivation	Ibid., as in construction	Ibid., as in construction	Ibid., as in construction
	Wildlife	Habitat and habitat expansion More close-to-nature areas	Biodiversity increase
	Landscape	Land and land use change	Landscape and landscape structure change
Disaster			
Accidents	Earth, soil	Accidental soil contamination	Reduced usability
	Surface water	Accidental water pollution	Deterioration of quality of life and living space
	Air	Emergency air pollution	Soil and water pollution due to sedimentation
			Adverse physiological effects
	Settlement	Noise and vibration interference	Adverse physiological effects
	Wildlife	Habitat and habitat loss Individual death	Degradation

2.2 Impact areas

2.2.1 Landscape protection

From the point of view of our study, the systems of the habitats affected by the trail, the people living in and visiting the affected settlements, and those who will use the built road in the future can be considered as having an impact. When choosing the ideal route version, the primary consideration is the preservation of valuable areas, habitats and landscape elements, and

during the design, the users of the road and those who suffer from its effects are in the focus of the design (e.g. integration into the landscape).

From the point of view of landscape protection and townscape protection, the extent of the impact area is primarily influenced by the topography, vegetation cover, territorial built-up area and the proposed measures. The direct area of influence is the part of the region whose landscape, unique landscape value and land use method are directly affected by the investment. This cannot be expressed in terms of a uniform distance, the immediate area of influence varies depending on all this.

It also indirectly affects all the areas from which the planning phase of the route can be seen, and the landscape elements that can be seen from the planned section. Visual effects may vary depending on the factors (interventions) and the individual effect bearers (landscape elements). Indirect areas of influence shall be all areas where any impact of the investment can be perceived (regional development, land use change, landscape protection, landscape rehabilitation).

Direct Impact Area

From the point of view of landscape protection/townscape protection, the area directly occupied by the facility is understood as the area directly used by the facility.

Indirect Impact Area

It also indirectly affects all the areas from which the road can be seen and the landscape elements that can be seen from the road. Visual effects may vary depending on the factors (interventions) and the individual effect bearers (landscape elements). The individual interventions may also differ according to the sensitivity of the landscape, the intensity of the interventions and the extent of the effects. Indirect areas of influence shall be considered all areas where any impact of the investment can be perceived (regional development, land use change, landscape protection, landscape rehabilitation), which is possible even at a distance of several km.

There is also a change in terms of visual effects, as in the case of large structures, the area of impact is much more extensive (e.g. bridges, roundabout junctions, etc.) than if we only take the effects of the roadway on the landscape. The effect on the landscape in the vicinity of the junctions can also be an area development, as these areas can become more valuable as a result of easier access.

2.2.2 Wildlife and ecological system

The natural or near-natural habitats in the area and its vicinity, the animals that live, live, feed, breed, rest, hide and migrate are the beneficiaries of the investment.

Direct Impact Area

In the case of a planned aligned facility, the direct area of influence (construction area) extends to the border of expropriation/land acquisition.

Indirect Impact Area

When delimiting the indirect impact area, a strip of 100 meters from the axis of the planned route was taken into account in the case of areas covered with agricultural or natural or natural vegetation.

Obviously, in the vicinity of the intersections of separate levels and the corrected sections of the planned paved and agricultural roads, the area of influence is adapted and widened to the necessary facilities.

2.2.3 Geological medium, groundwater

From the point of view of the geological medium, soil and groundwater, the soil and geological medium of road shoulders and ditches, the topsoil next to the roadway, groundwater, in some cases the aquifer water and the water bases settled on them are the ones that bear an impact.

Impact Areas

In the case of soil, the immediate area of influence will be the zone surrounded by the expropriation border, service roads outside the border, and landfills and temporary land occupations established during construction. The indirect area of influence is limited to a strip of approximately 50 m wide from the boundary line of these facilities.

In the case of the geological medium, a similar direct and indirect area of influence can be expected.

In the case of groundwater, the area of the shoulder and the ditch can be considered as the direct area of influence. An indirect area of influence is the area affected by the flow of groundwater, the extent of which depends on the groundwater level, the direction of groundwater flow and the composition of the soil.

2.2.4 Surface waters

From the point of view of surface waters, the watercourses in the vicinity of the trail and the watercourses crossed by it are the ones that have an impact. In our case, however, neither a watercourse nor stagnant water can be found in the design area.

Impact Areas

The direct area of influence of surface waters at the crossing of watercourses and at the point of discharge of rainwater drained from the road into the receiver is 25-50 m on the upstream side and 50-100 m on the downstream side, depending on the nature of the watercourse, however, such areas cannot be designated in the examined area, because the planned investment does not cross watercourses.

2.2.5 Air quality

From the point of view of air protection, the impact bearers are the population living in the immediate and indirect vicinity of the trails and the wildlife found in nature reserves that are sensitive to air quality.

Impact Areas

Due to the dust removal during construction and the emission of machinery, the area of influence of the expressway is estimated to be 100 meters. At the border crossing point, this distance was set at 200 m, considering that taller buildings and structures are also being built. An impact area of 50 m will be defined around the axis of the newly established dirt roads.

The effects of the operation within the immediate area of influence (this is the expropriation limit in practice) increase due to transport-related emissions, but the increase is almost undetectable for those living next to the road (at a distance of more than 50 m from the road) (<5%).

The effect of the operation on the public road network surrounding the project, which is considered to be the indirect area of impact of the expressway, will be improving, as a significant part of the increase in traffic and expected traffic (not counting the insert version) will be transferred to the expressway during operation, so we expect a significant drop in emissions there.

2.2.6 Noise and vibration

Those living in the part of the settlement affected by the planned road and those visiting its surroundings, those working at workplaces in the area, and the travelling public using the planned road can be considered as having an impact.

Impact Areas

From the point of view of noise and vibration, we distinguish between direct and indirect areas of influence. The direct area of influence is defined by Government Decree No. 284/2007. (X. 29.) Government Decree.

Indirect area of impact, the area related to the implementation and operation of the investment, where its noise and vibration protection effects prevail. In particular, the environment of transport and access routes can be considered as such, where noise and vibration loads increase due to construction and implementation (operation).

The construction impact area is 65 metres from the boundary road axes of the alignment and the border crossing point (isoline of reduction to 65 dB).

Based on the measurement report, the night-time noise pollution at the traffic measurement points is close to or above the limit value. At the environmental/operational measuring point, the result of the night-time measurement is also close to the limit value, but the statistical value is more than 10 dB below the limit value. With regard to safety, the area of influence is determined with the night-time limit of 10 dB isoline (45 dB), from which the effects of other traffic-type noise sources within the affected area are subtracted, and its typical width varies between 420 and 510 meters from the center line of the alignment. This area of influence also includes the operational area of the border crossing, which, based on the model calculation, leaves the area of the border crossing only by about 20 meters at the truck parking lots (35 dB contour based on the recreation area contour established for the area not to be protected from noise) – however, the sound pressure level formed here is at least 1 order of magnitude (10 dB) lower (i.e. traffic noise will dominate the operational area) – here the boundary of the combined traffic impact area is the outer border crossing. It runs at a distance of 80-150 meters from the center lines of its road sections. The affected area does not affect buildings to be protected.

The construction and operation vibration protection impact area of the investment is the 10-metre environment of the investment area, which is not relevant due to the long distance of the buildings to be protected, and is fulfilled within the expropriation limit based on a preliminary estimate, so there is no need to delimit it separately.

2.2.7 Built environment and settlements

From the point of view of the protection of the built environment, the affected settlements and the structures intended for human habitation are the ones that bear the influence. In addition, among the effects on the built environment, we take into account the protection of built and material monuments of cultural heritage (monuments, archaeological sites).

Impact Areas

By direct area of influence, we mean the affected houses and structures that are structurally or otherwise affected by the investment. All built objects that are subject to the more distant (spatial and temporal) effects of the investment can be found in an indirect impact area.

Direct area of impact: the direct area of influence of the project is the actual physical occupation of the route during construction (the expropriation boundary) and any other buildings or structures located within a 25-25 meter strip from the route. The direct area of operation is the entire area managed by the road operator.

Indirect area of impact: from the point of view of the built environment, the road network elements affected by transport, as well as temporary landfills or treatment areas for the disposal of demolished and extracted materials, are located in an indirect area of influence during construction. The outskirts of the affected settlement of Tompa can be considered an indirect area of influence both during construction and operation. In the operation phase, main road 52 and road 5501 can also be interpreted as indirect areas of impact. In the case of main road 53, its load will be significantly reduced as a result of the development due to the new border crossing, so the operation of the expressway and border crossing point will be improving from the point of view of the built environment.

2.2.8 Social, economic, environmental health impacts

In a narrower sense, the users of the new road and those living in the vicinity of the line, and in a broader sense, the inhabitants and economic operators of Tompa (H) – Subotica (SRB) are the beneficiaries of the investment.

The extent of the socio-economic and environmental health impacts primarily includes the population living and working in the Tompa-Subotica area, as well as the users of the expressway and the new border crossing point.

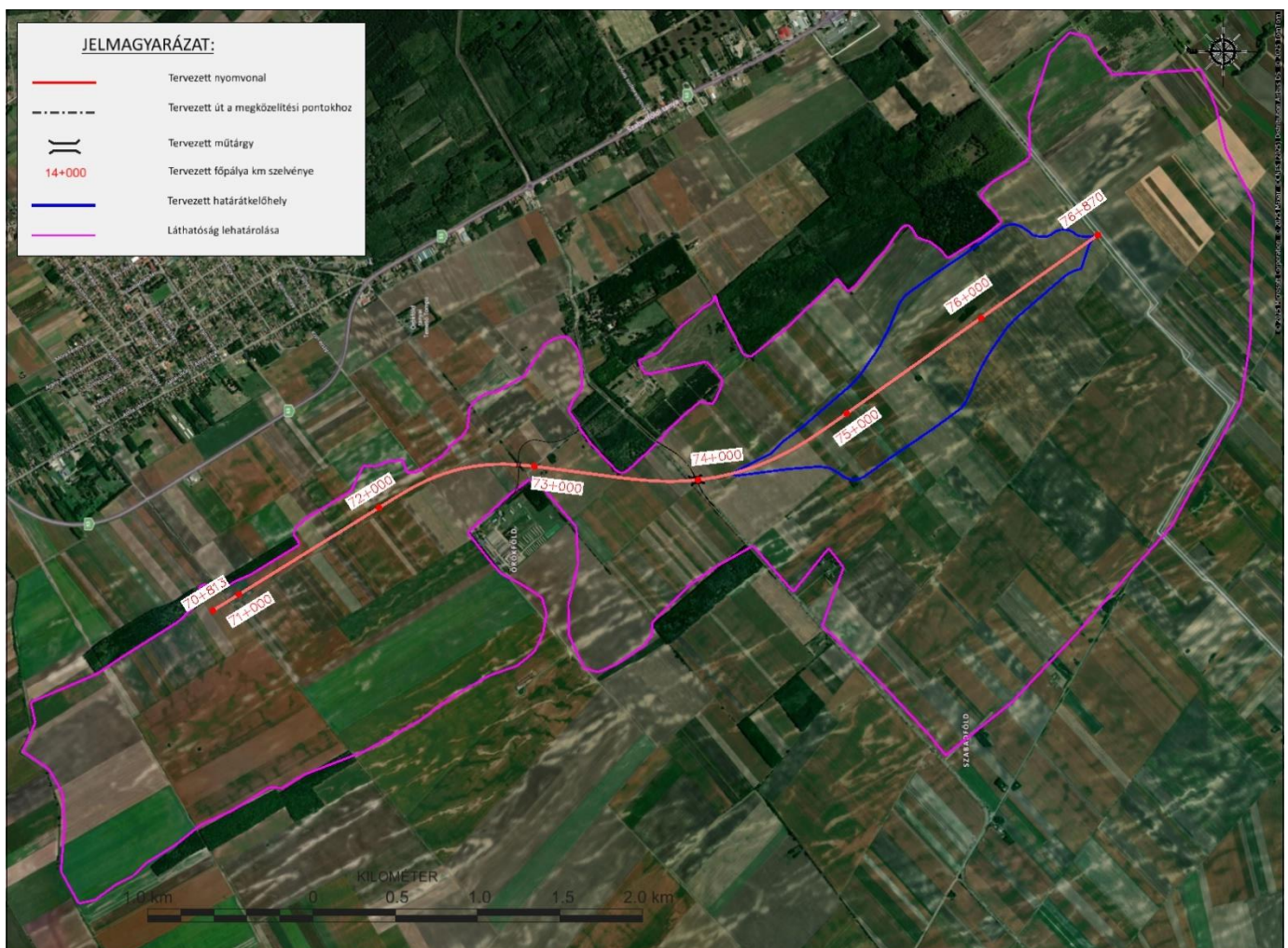
3 Estimation and evaluation of cross-border impacts

3.1 Expected changes in the state of environmental elements and systems

3.1.1 Landscape protection

From the point of view of landscape protection, the planned new complex rest area and border crossing point may have a cross-border effect, as on the Serbian side, the route is planned in an environment similar to that in Hungary, i.e. the route only touches large-scale arable land until the Subotica bypass. Based on the visibility studies carried out in the EIA, it can be stated that due to the intersections at different levels, the complex rest area/border crossing point and expressway change the landscape from the northern direction. However, this effect will not be significant, as there is no element of significant landscape value on the Serbian side, and there are no settlements several kilometers away from which the view may be disturbing.

Figure 3.1: Visibility delimitation of the planned expressway and its associated facilities.



On the Serbian side, the construction and operation of the planned road is expected to change the existing land uses, land cover, landscape ecological relationships and territorial functions in a similar way as on the Hungarian side. On the Serbian side, the trail will also only touch arable land between the connection to the Subotica bypass and the border. From the point of view of land use, much smaller land occupation is expected on the Serbian side, as there is no need to build a 90-hectare border crossing point on the Serbian side due to the joint Hungarian-Serbian border crossing point.

3.1.2 Wildlife

From the point of view of the cross-border impact, an important factor is the protected areas of wildlife protection on the Serbian side. According to the available information, there is no area between the national border and the Subotica bypass. On the Serbian side, the route also touches similar large-scale arable land.

From the point of view of wildlife protection, similar effects can be expected in Serbia as in Hungary both during construction and operation, with the exception that there will be no near-natural forest areas next to the trail, and there will be no complex 90-hectare rest area and border crossing on the other side of the border.

Image 3.1: View of Serbia from the Hungarian side, with the technical lock in the foreground



Source: Site Tour, Mott MacDonald, March 2024

Image 3.2: Habitats next to the technical lock on the Hungarian side



Source: Site Tour, Mott MacDonald, May 2024

In the planning area, species commonly distributed in agricultural areas are present on both sides of the border. The greatest impact of the planned expressway and complex resting place/border crossing point is the destruction of production areas and the loss of habitats. However, this effect will only occur on the Hungarian side during construction and can only be significant if the investment destroys areas of conservation value. However, such areas are not located within the catchment area near the border. We are not aware of the occurrence of a protected plant in the vicinity of the boundary intersection.

Of the protected species, only the bird class has more valuable species in the vicinity of the trail, which are the following: goshawk, buzzard, black stork, lapwing, raven. However, these species nest in the Tanács Forest on the Hungarian side, which is avoided by the investment, so the survival of their nesting site will be ensured. The bee-eater nesting site near the border fence will not be affected by either construction or operation, and the investment will also avoid the breeding site of highly protected birds. At the time of construction, it must be taken into account that these species will temporarily avoid the construction site and its surroundings, but they will

most likely reoccupy the established green areas during operation. Neither the planned road and its facilities, nor the technical barrier are a barrier for birds, as they can fly over them.

However, we note that in the planning area, the technical barrier on border protection is a significant barrier for animal species larger than voles and mice, which is primarily an impenetrable obstacle for certain small mammals (badgers, foxes, golden jackals) and large game (wild boar, roe deer, fallow deer and red deer) at present.

Overall, no significant effects are to be expected near the boundary intersection during construction or operation, the effects will be bearable for the animal species occurring here.

3.1.3 Soil and water protection

On the Serbian side, according to our current information, there are no water bases or waterworks wells near the planned route, and there are no mining areas either. On the Serbian side, the extension of the expressway will not affect surface watercourses or stagnant water, only agricultural areas will be affected.

Under normal operating conditions, there is no cross-border effect either during construction or operation. From the point of view of soil quality, this is theoretically possible only if an accident-like event occurs directly on the border, and from the point of view of groundwater protection, if an accident-like event occurs near the border, not more than 50 m from it.

Rainwater that does not contain significant amounts of pollutants is drained into the ditches and desiccation reservoirs on the Hungarian side. In normal operation, the planned activity does not cause a cross-border effect in surface waters. In the unexpected case of a significant amount of hazardous substances being released into the environment in the vicinity of the complex resting area/border crossing point, the contamination of surface waters is not to be expected either, as the trail does not touch a watercourse.

3.1.4 Noise and vibration

On the Serbian side of the border, at a distance of several hundred meters, there is no area to be protected from the point of view of noise and vibration protection, and no cross-border impact is to be expected during construction.

The cross-border construction noise impact can only be heard at a distance of a few 10 metres, but the requirements of the impact area may change, so the contours of the impact areas only extend to the national border. On the Serbian side, there are no facilities to be protected (e.g. residential areas, recreation areas, etc.) in the 1 km vicinity of the construction site, so the impact of the construction remains bearable on the Serbian side as well as on the domestic side.

The noise effects of the operation will be neutral on the other side of the border as well, on the one hand due to the long distance of the buildings to be protected, and on the other hand, on the other side of the border, the noise impact of the section of the Serbian expressway will be decisive.

On the Serbian side, the buildings to be protected next to the current border crossing point (along main road 11) will have an improving effect due to the diversion of traffic.

3.1.5 Air quality

During the construction phase, the air quality effects on the Serbian side are similar to those on the Hungarian side. During the establishment of the complex resting place, under unfavourable

meteorological conditions, in the case of dust, it can reach a distance of up to 100-200 meters across the national border. For the other components tested (NO_x, CO, NO₂), if the machines work directly near the border, a cross-border effect of a few 10 m can be expected. However, these effects will be bearable, as there are no sensitive effects (e.g. residential area, recreational area, etc.) on the Serbian side in the 1 km vicinity of the construction area.

During operation, the air load on the Serbian side is similar to that on the Hungarian side. The effects of the operation increase within the immediate area of impact (in practice, this is the expropriation limit) due to emissions from transport, but at a distance of more than 50 m from the road, the increase is almost undetectable (<5%). This effect will be tolerable on the other side of the border, as well as on the Hungarian side, as there is no 1 km sensitive area near the border intersection on the Serbian side either.

The effect of the operation on the surrounding road network, which is considered to be the indirect area of influence of the expressway, will be improving, as a significant part of the traffic will be transferred to the expressway during operation, so we expect a significant decrease in emissions there on the Serbian side along main road No. 11 as well.

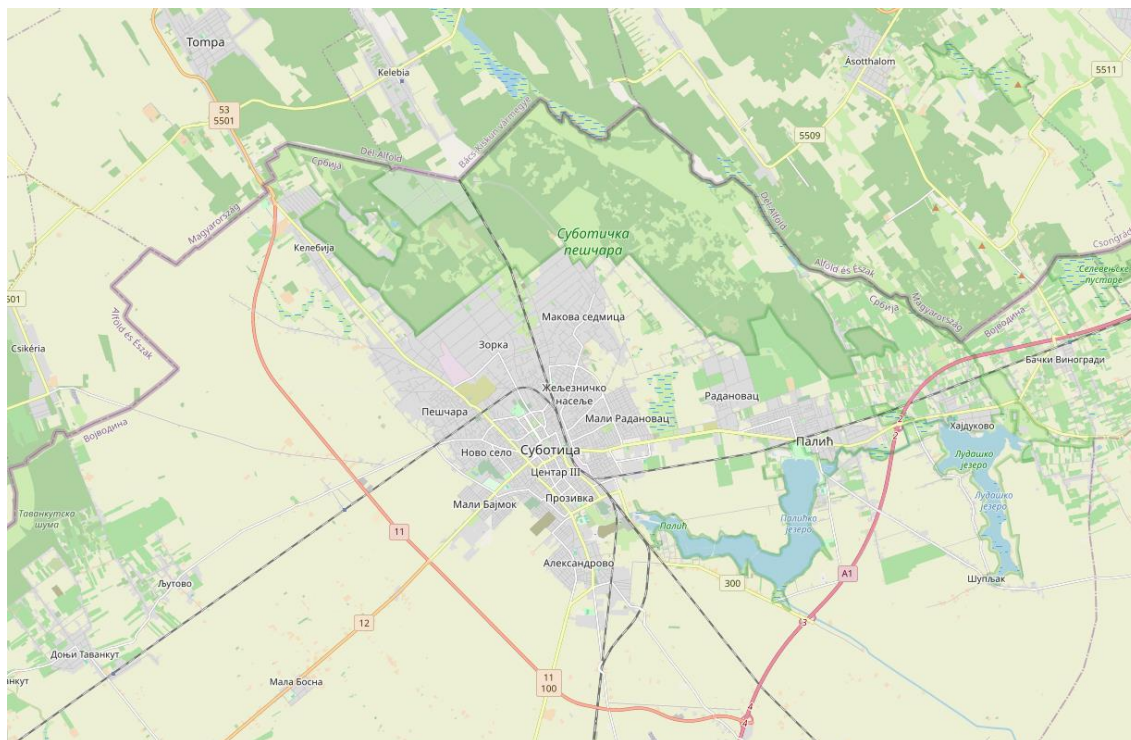
3.1.6 Built environment

On the Serbian side of the border, in a strip of several hundred meters, there are no monuments, structures or settlements, and no cross-border effect is to be expected.

3.2 The connected section of the road

The planned expressway will continue after the Hungarian-Serbian border in the territory of the Republic of Serbia. On the Serbian side, the continuation is planned to the so-called Y bypass (road No. 11) bypassing Subotica, which connects to the A1 (E75) motorway in the southern part of Subotica.

Figure 3.2: Serbian road network in the wider planning area



Source: <https://www.openstreetmap.org>

As it can be seen in the figure above, a new road section needs to be built on the Serbian side between the 11th bypass and the border crossing point. At present, based on the available information, the actual planning has not yet begun on the Serbian side, preliminary consultations and area surveys are taking place in parallel with the preparation of the APA on the Hungarian side.

From an environmental point of view, it can be said that there are no residential areas, nature reserves, surface water bodies, water bases or groundwater abstractions, significant archaeological or monumental areas between the Serbian main road 11 and the border crossing point. The further planning phase will affect agricultural (arable land) up to the connecting bypass No. 11. It should be noted that the designation of the border intersection point on the Serbian side was primarily determined by the existing structure of the 11th bypass, as its expropriation was planned for the construction of 2x2 lanes, so the border intersection was also adjusted to it.

4 Mitigation measures

4.1 Measures to prevent and reduce adverse impacts

4.1.1 Landscape and settlement protection

- On the entire section of the planned route, the destroyed surfaces remaining during the construction must be rehabilitated. Rehabilitation is to be carried out outside the area of the roadway and ditches, within the expropriation limit, or in other work areas used during construction, by ensuring the basic conditions of land use and ecological conditions prior to construction.
- In the affected areas, any public utility replacements that may become necessary must be carried out before rehabilitation. During rehabilitation works, increased attention is required near the utility lines so that the lines are not damaged.
- Within the expropriated areas, the planting work can be carried out after the rehabilitation of the abandoned dirt roads and ditches. The rehabilitated area outside the farm areas shall be returned to cultivation according to the cultivation branch of the neighbouring area.
- The rehabilitation of the destroyed surfaces remaining as a result of the construction of the facilities necessary for the implementation of other activities related to the investment (e.g. other structures related to water management) must also be ensured in the same way.
- The marching routes must be planned in such a way that sensitive natural and landscape values as well as areas sensitive from the point of view of landscape protection are not permanently and irreversibly damaged. It must be avoided with the parade routes, it cannot be developed:
 - in the area of the Tanács Forest and the Báró Pasture;
- The location and design of the parade routes in the vicinity of natural areas must be coordinated with the Kiskunság National Park Directorate before construction.
- In order to ensure the protection of slopes against erosion, the use of engineering biological methods – primarily grassland and shrub planting – is recommended along the entire length of the planned route. When planting plant species, it is worth choosing low-growing, low-growing species that tolerate unfavourable site conditions, but are locally enlarged if possible.
- In the case of the expropriation of areas of a size that may not be suitable for cultivation, it is recommended to plant a row of trees, shrubs or forest strips on the following sections:

Table 4.1: Proposed landscape protection measures

Km Mileage	Expected impact	Proposed action
70+960-71+460	Abandonment of cultivation on the eastern side of the road	Afforestation of the abandoned narrow arable land, in connection with the Tompa 76/A forest member located parallel to the
72+900-73+000	Abandonment of cultivation on the western side of the road	Afforestation of the abandoned narrow arable land, planting of trees on both sides of the access road correction leading to the MgTsz site
73+980-74+000	Abandonment of cultivation with the correction of the planned road 5501 j.	Installation of a row of trees on both sides of road 5501
76+060-76+430	Abandonment of cultivation in a narrow width of about 20 m between the planned complex resting place/border crossing point and the forest area of the Tanács Forest.	Afforestation of the abandoned narrow area and its attachment to the Tompa 63/A forest member

- The above km section numbers shall be specified/elaborated in the planting plans to be prepared in the following planning phases, depending on the final expropriation plans.

4.1.2 Wildlife protection

4.1.2.1 General protective measures:

- On the entire section, tree felling must be carried out outside the growing season (between 1 October and 1 March). If the earthworks and the removal of trees and shrubs cannot be carried out within the prescribed deadline, in this case the contractor in cooperation with the Kiskunság National Park Directorate, before the works, jointly surveys the location of the work with a wildlife protection expert and a representative of the National Park Directorate, officially records the extent, nature and location of the planned interventions, performs any necessary wildlife protection measures, nature conservation Under professional supervision – if it is determined during the consultation that no damage to nature conservation is expected – the work may be permitted. If damage to nature conservation is expected, the restriction cannot be lifted.
- Landfills, material extraction sites and sites may not be established in natural areas (grasslands, forest patches, groups of trees).
- A 2.4 m high protective fence is planned to be built on both sides of the planned expressway along the entire length of the planned section due to the presence of red deer. The lower 1 m high part of the protective fence must be provided with a denser 5x5 cm metal mesh between 70+813 and 73+000 km due to the risk of hitting the extremely large number of small mammals (hares, foxes, badgers).

4.1.2.2 Special protective measures:

- To ensure the movement of big game, an underpass game crossing is recommended in the 73+990 km chainage. The planned game crossing shall have the following parameters in accordance with the eUT 03.07.53:2019/M1:2021 standard:
 - Minimum height: 4.0 m (sized for red deer);
 - Minimum width of lane: 10 m;
 - Outdoor index: 1.5 or greater;
 - The lane running parallel to road 5501 must be separated from the road with little traffic by a guardrail;
 - The traffic lane cannot be provided with a solid pavement.
- Before starting the construction, the habitat of the protected sowing tares and the highly protected bee-eater must be surveyed. If the populations of the protected plant species and the nesting site of the highly protected bee-eater can still be found in the area, they must be demarcated and avoided by construction activities in accordance with the following point.
- The construction site must be clearly demarcated (taped, periodic protective fence) so that the forest area of the Tanács Forest in the vicinity of the construction site, as well as the habitat of protected plant species and the breeding site of the highly protected bird species are not damaged.

Table 4.2: Parameters of the temporary demarcation of the construction site (taping, temporary protective fence)

Km Mileage	Page	Justification
72+735	left	In order to protect the stands of <i>the protected sowing tares</i> (<i>Agrostemma githago</i>) located on the edge of the dirt road
76+060-76+430	left	Forest edge of the Tanács Forest on the edge of a complex resting place/border crossing point in order to protect the forest habitat
76+870	left	The bee-eater (<i>Merops apiaster</i>) is suitable for nesting in order to protect a nesting site with a 1-1.5 high sand wall

4.1.2.3 Operational recommendations

- The wildlife passage and the protective fence must be continuously maintained.
- On the surfaces affected by the construction, weed growth and primarily the spread of alien and invasive plants must be prevented, which requires continuous follow-up care (mowing, chemical weed control if necessary).
- The following is necessary to protect against the spread of invasive alien plants:
 - white acacia (*Robinia pseudoacacia*) – Its spread can be prevented by chemical control.
 - idol tree (*Ailanthus altissima*) – During earth movements, the topsoil infected with root fragments cannot be reused. Its spread can be prevented by chemical weed control.
 - western whip tree (*Celtis occidentalis*) – Cutting back the specimens that appear, preventing seed production, and if necessary, chemical extermination.
 - acacia (*Amorpha fruticosa*): the topsoil infected with root fragments cannot be reused during earthmoving. Mechanical eradication of seedlings must be carried out.
 - tall goldenrod (*Solidago gigantea*) – During earthmoving, the topsoil infected with root fragments cannot be reused. Its spread can be prevented by mowing, if necessary, by chemical weed control.
 - silkworm (*Asclepias syriaca*): the soil layer infected with its howitzer roots cannot be used. Its spread can be prevented by chemical weed control.
 - ragweed (*Ambrosia artemisifolia*) – It can be controlled by grassing open soil surfaces as soon as possible and by mowing.
- It is recommended to carry out the planned planting of plants along the main road and the afforestation and shrubs planned in the area of the border crossing point with fast-growing native tree species characteristic of the landscape (monocotyledon, striped goat chewer, blackthorn, domestic poplars, birch, etc.). The final planting plans and the list of tree and shrub species to be planted must be agreed with the Kiskunság National Park Directorate in the next planning phases.
- When planning the lighting that may become necessary during operation, the provisions of Section 35 (1) d) of Act LIII of 1996 on Nature Protection and Section 54 (2) d) of Government Decree 253/1997 (XII.20.) on National Urban Planning and Building Requirements shall be taken into account.
- For the lighting of the sections to be illuminated and the border crossing point, it is recommended to use light sources with the least harmful effect on wildlife and color temperature: The light sources may emit up to 25% of their total power in the wavelength range below 550 nm. Light sources with a color temperature of up to 2500 K can be used. The light must be directed exclusively at the area to be illuminated (road, parking lots). In the

case of luminaires, the ULOR value of 0 or very close to it must be ensured: no light should enter the space above the plane of the horizon

4.1.3 Protection of geological medium and groundwater

- During construction, only machines in perfect technical condition may be used. During construction, no pollutants may enter groundwater or soil.
- The temporary storage facilities for the waste generated during construction, the fuel storage facility and the location of the assembly area must be designated in an area that is less susceptible to contamination and not affected by high groundwater levels.
- Any pollutants that may spill on the work site must be immediately absorbed, collected and collected as hazardous waste in a collection container suitable for the purpose until removal.
- In the event of extraordinary pollution, it must be immediately eliminated and it must be reported to the competent environmental authority with the measures taken to eliminate it.
- The removed (humussed) upper fertile layer must be deposited separately and used in subsequent landscaping (humus rescue). To do this, a soil protection plan must be developed in advance and approved by the authority.
- The excavated land should be used as close as possible, in the construction of embankments (where the excavated material is geotechnically suitable).
- It is recommended to arrange the work area as soon as possible, which includes plant planting.

4.1.4 Protection of surface waters

- Structures, pavements and drains must be dimensioned to drain large amounts of rainwater that can be predicted to occur as a result of less frequent but intense precipitation activity (showers, thunderstorms) due to climate change.
- During the construction, only machines in perfect technical condition may be used, no pollutants may enter surface waters.
- In the event of extraordinary pollution, it must be immediately eliminated and it must be reported to the competent environmental authority with the measures taken to eliminate it.

4.1.5 Air quality protection

- In dry, windy weather, watering should be used to reduce the amount of dusting.
- It is recommended to cover the material transported on the trucks.
- During construction works, it is necessary to use a wheel wash and/or to clean the mud applied to the paved road (by mechanical or manual force) for transport vehicles entering the main road from the unpaved construction site (in a justified meteorological situation) in order to minimise dust build-up.
- It is recommended to use the nearest possible material extraction sites or asphalt mixing plants.
- During construction works, machines in appropriate technical condition shall be used, which comply with the provisions of Decree 6/1990 (IV.12.) KöHÉM Decree.

4.1.6 Noise and vibration protection

4.1.6.1 Construction

- Minimizing the resulting noise performance level by using and maintaining modern machinery.

- When planning construction transport routes, preference should be given to roads with more traffic, avoiding sections in the inner area, and in the case of an inner area section, preference should be given to sections with fewer facades to be protected and/or better road quality.

4.1.6.2 Operation

Regular maintenance of the road and border crossing point in order to prevent a large increase in emissions due to road defects.

4.1.7 Protection of the built environment and cultural heritage

- In the case of public utilities in an uncertain situation, a preliminary manual excavation is recommended.
- In the case of buildings and structures located next to the alignment and in its immediate vicinity, a preventive condition survey (static condition survey) is recommended before the start of construction works and after commissioning.
- Preventive archaeological excavations must be carried out in the part of the archaeological site affected by earthworks using the method recommended in the ERD. Archaeological observation is necessary during the entire period of construction, the cost of which must be calculated by the contractor.

4.1.8 Climate protection

- During construction, it is recommended to maintain traffic on the roads affected by the correction (avoiding congestion and slow driving, thus avoiding a significantly higher fuel consumption at low speeds).
- Structures, pavements and drains must be dimensioned to drain large amounts of rainwater that can be predicted to occur as a result of less frequent but intense precipitation activity (showers, thunderstorms) due to climate change.
- It is recommended to use the excavated soil and asphalt material from demolition as much as possible on site (e.g. for embankment construction, embankment).
- Limiting the work areas necessary for construction to as much as possible, protecting the vegetation there, reintroducing and replacing the absolutely necessary felled trees and vegetation as soon as possible, with professional and native species.
- The use of modern, modern and impeccable machinery and transport equipment is required.
- If available, the use of electrically powered construction machinery should be preferred to machines with internal combustion engines at the start of construction.
- During construction, the health of the workers must be emphatically protected (e.g. provision of protective drinks on warmer days)

